



BRIDGING THE COMMUNITY

BRINGING TOGETHER

Life'S Different Aspects

A complete lifestyle is made possible here at Datum Jelatek, with a range of dedicated retail selections all in one dynamic shopping mall. Located just below the residential towers, the shopping mall allows people of different communities to identify Datum Jelatek as a common meeting point; by bridging people together and catering to their various needs.



Mall Concourse Area

Benchmark ACCOMPLISHMENTS



Datum Jelatek was honoured with several awards and of these prestigious accolades is the silver GBI rating, granted for the many ways of green living that was incorporated into the development.

Datum Jelatek maximises efficient ventilation and promotes natural lighting, along with harvesting natural rainwater to sustain and cultivate an eco-friendly environment to live in.



BEST RESIDENTIAL
RENOVATION/
REDEVELOPMENT
MALAYSIA



BEST MIXED-USE
DEVELOPMENT
MALAYSIA



BEST MIXED-USE
ARCHITECTURE
MALAYSIA



MOST ICONIC DESIGN OF THE YEAR



Ascend to EXCELLENCE

With a connecting link bridge to the existing Jelatek LRT station, Datum Jelatek offers its residents a seamless integration to the city's recreational landmarks and iconic retail hubs.



JELATEK LRT STATION



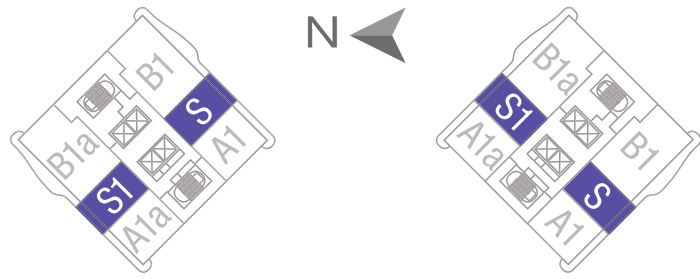
type **S**

type **S1**

557sf - 601sf

STUDIO

TOWER A & D

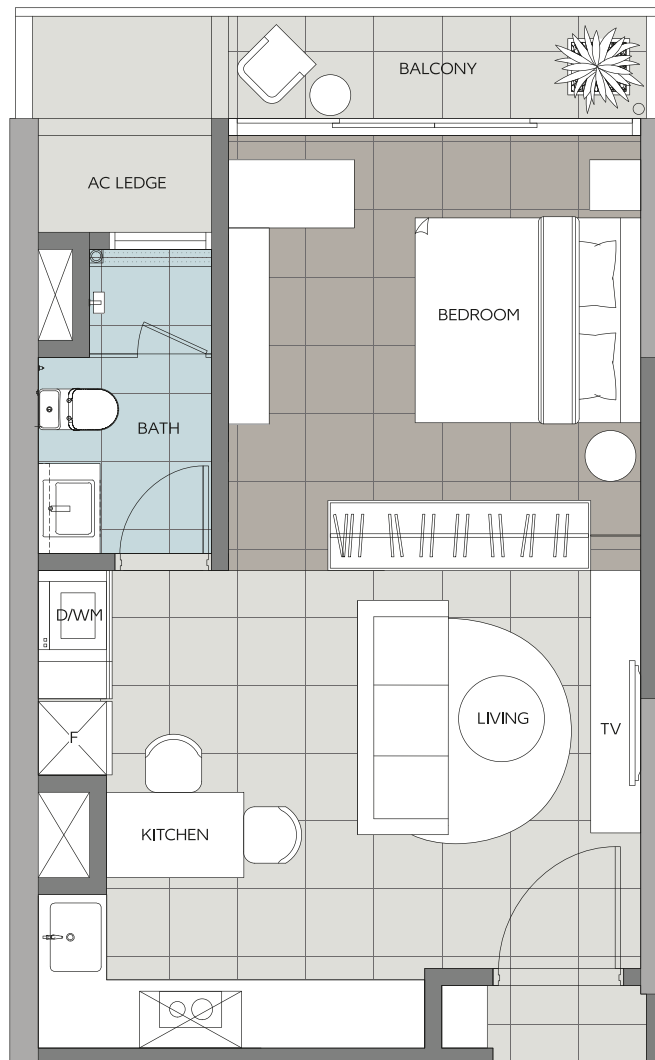


Tower D Tower A

Tower C Tower B



KLCC view



ENTRANCE

type

A1 & A1a

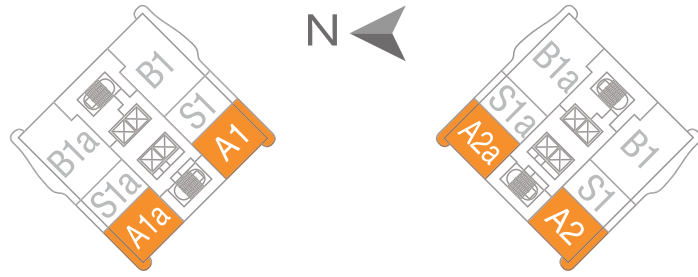
type

A2 & A2a

713sf - 845sf

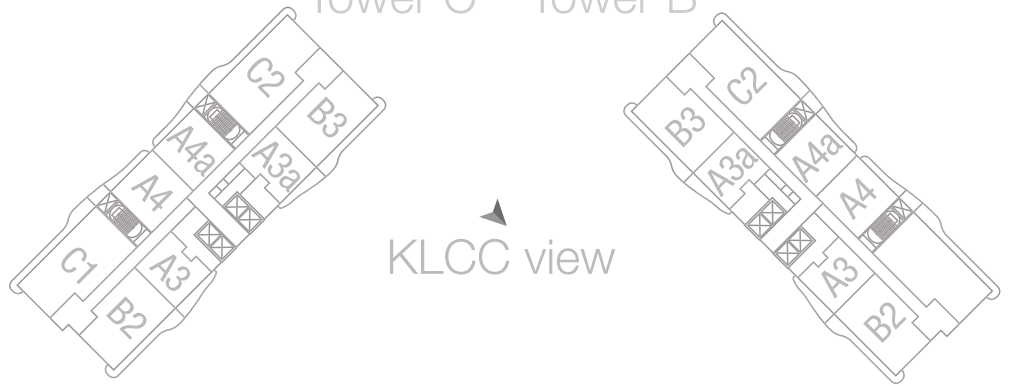
1 BEDROOM +
1 Bathroom

TOWER A & D

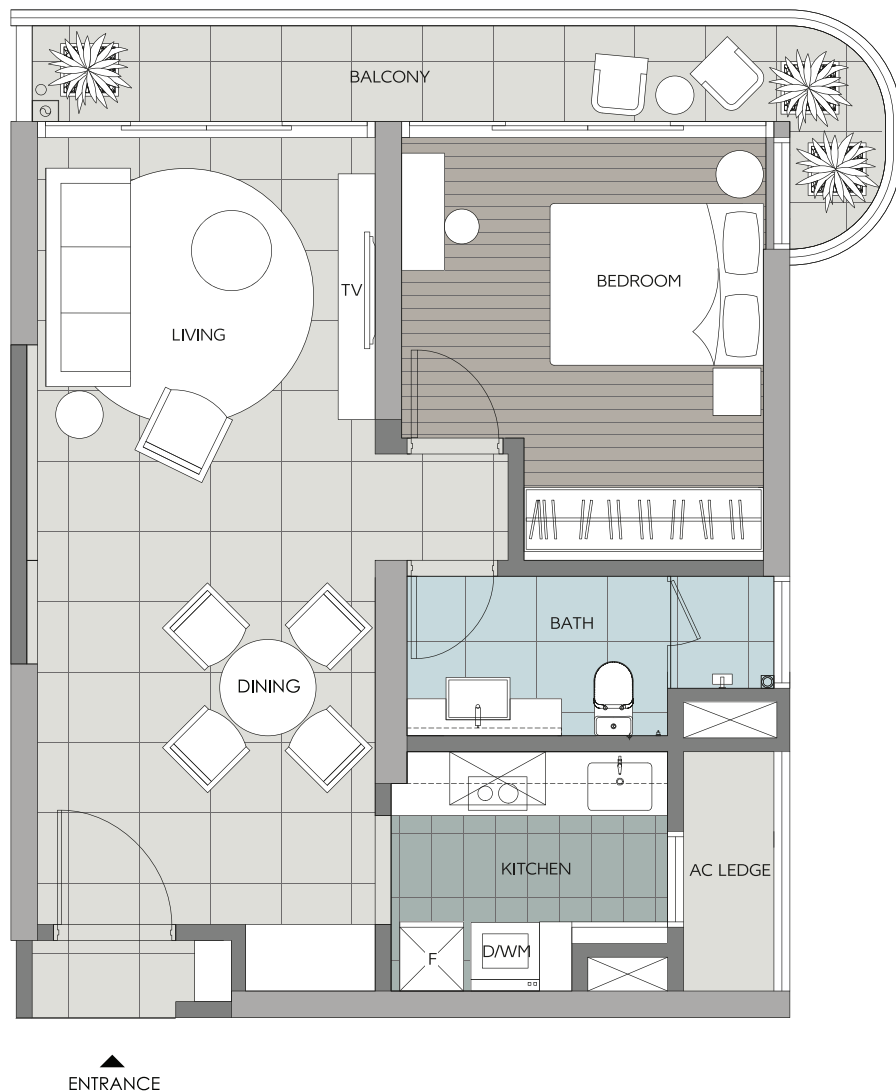


Tower D Tower A

Tower C Tower B



KLCC view



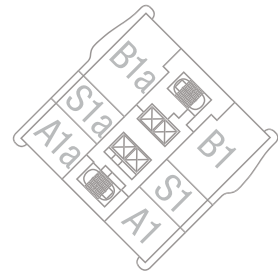
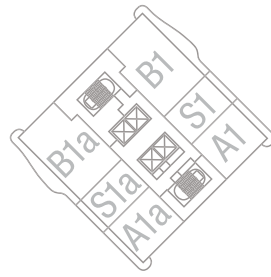
type **A3**

type **A4 & A4a**

713sf - 757sf

1 BEDROOM +
1 Bathroom

TOWER B & C

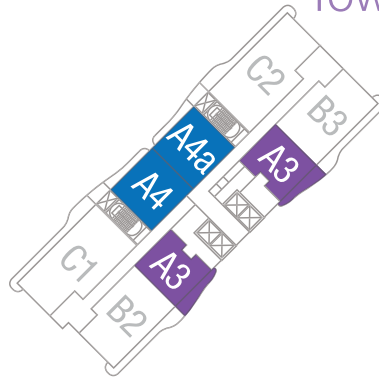


Tower D

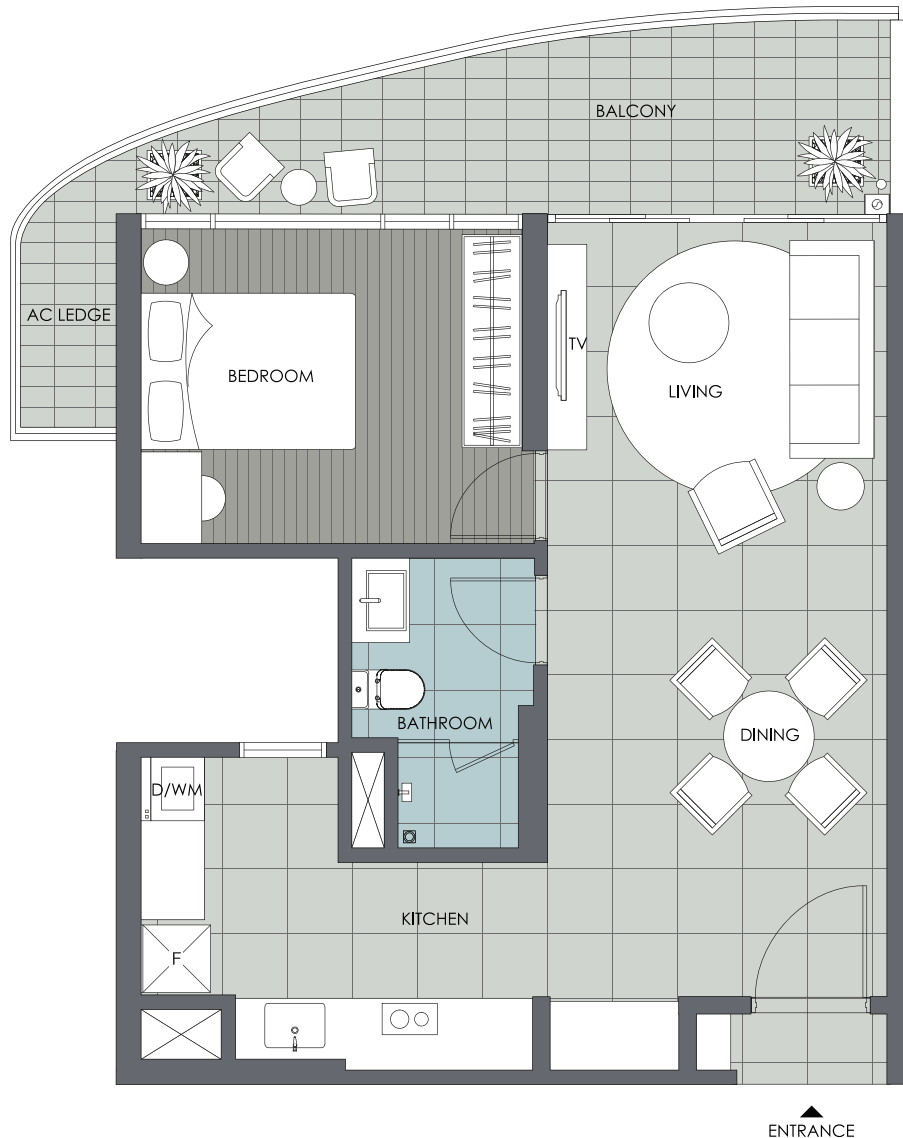
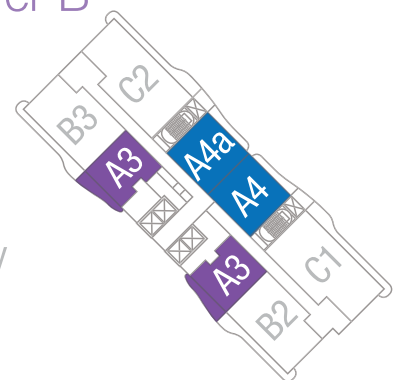
Tower A

Tower C

Tower B



KLCC view



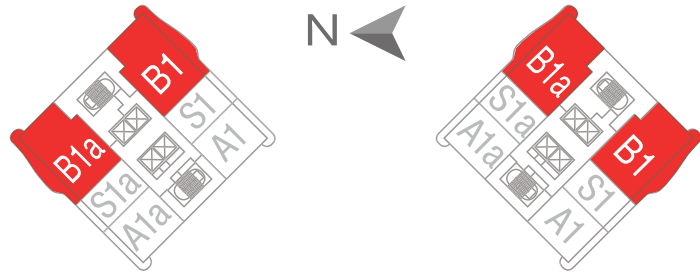
type **B1**

type **B1a**

1,271sf - 1,346sf

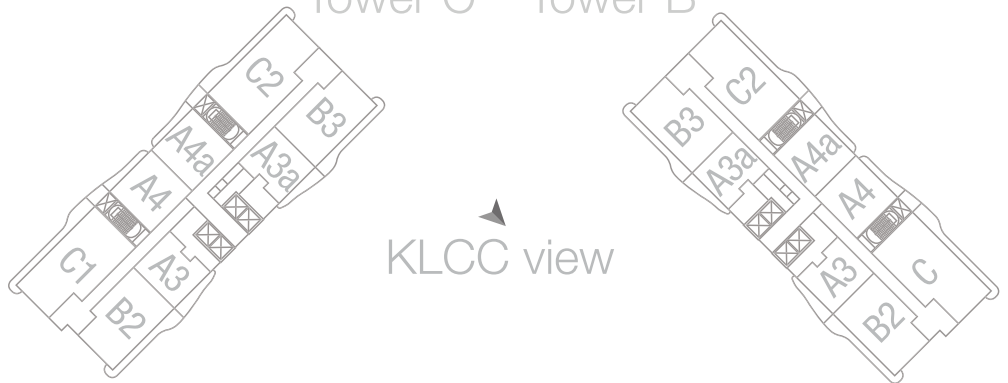
2 BEDROOMS +
2 Bathrooms

TOWER A & D



Tower D Tower A

Tower C Tower B



KLCC view



ENTRANCE

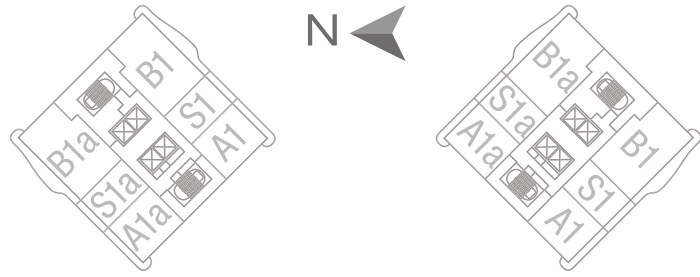
type **B2**

type **B3**

1,271sf - 1,317sf

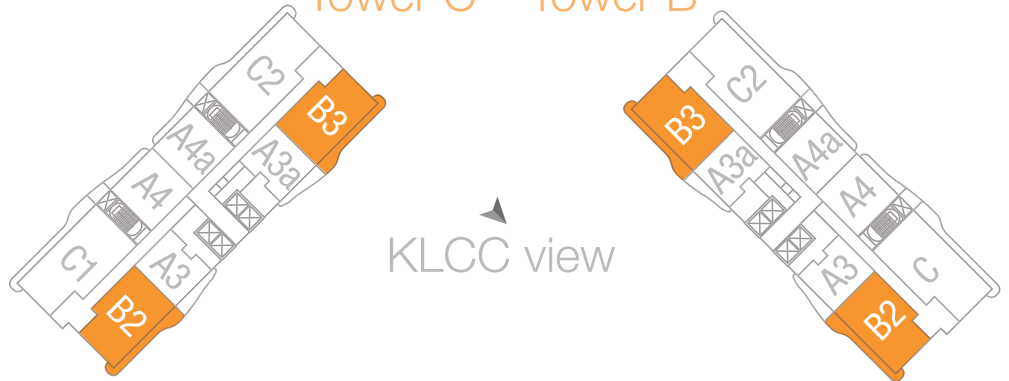
2 BEDROOMS +
2 Bathrooms

TOWER B & C

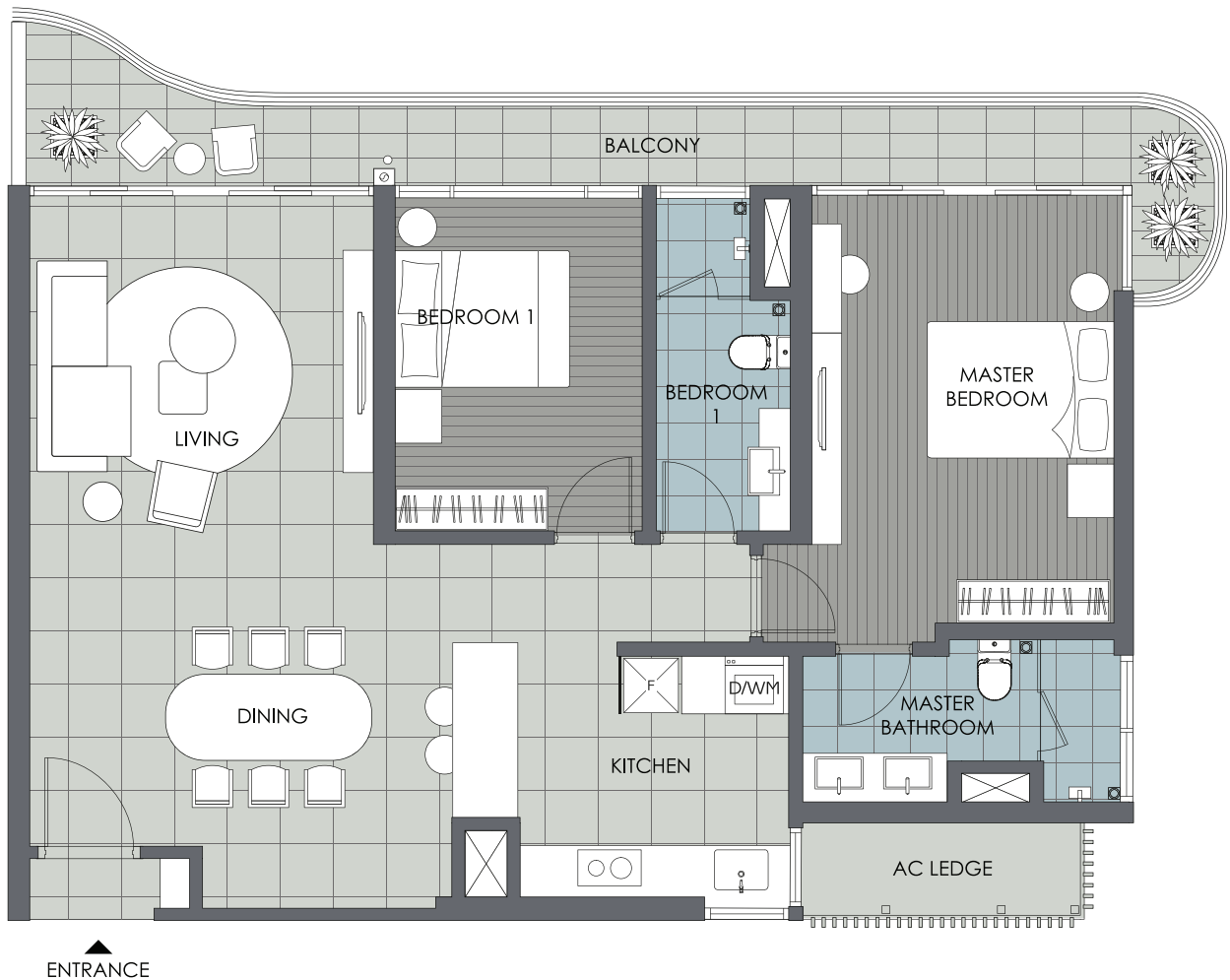


Tower D Tower A

Tower C Tower B



KLCC view



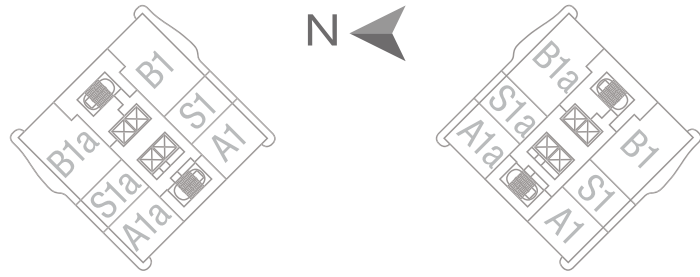
type **C1**

type **C2**

1,604sf - 1,657sf

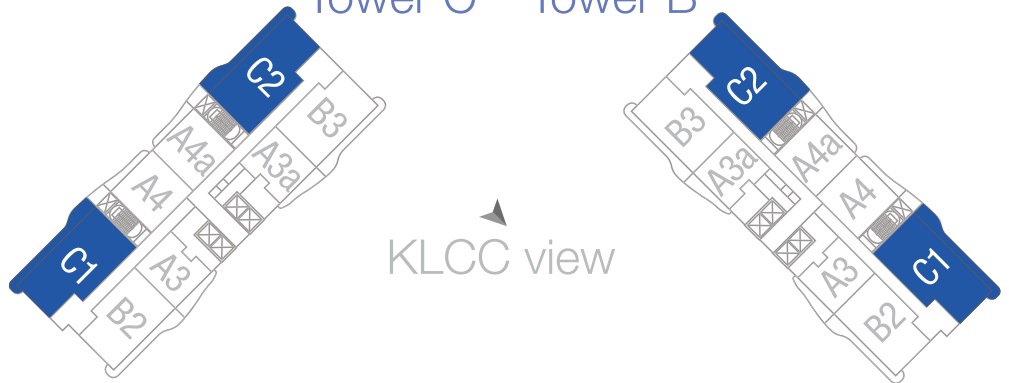
3 BEDROOMS +
3 Bathrooms

TOWER B & C

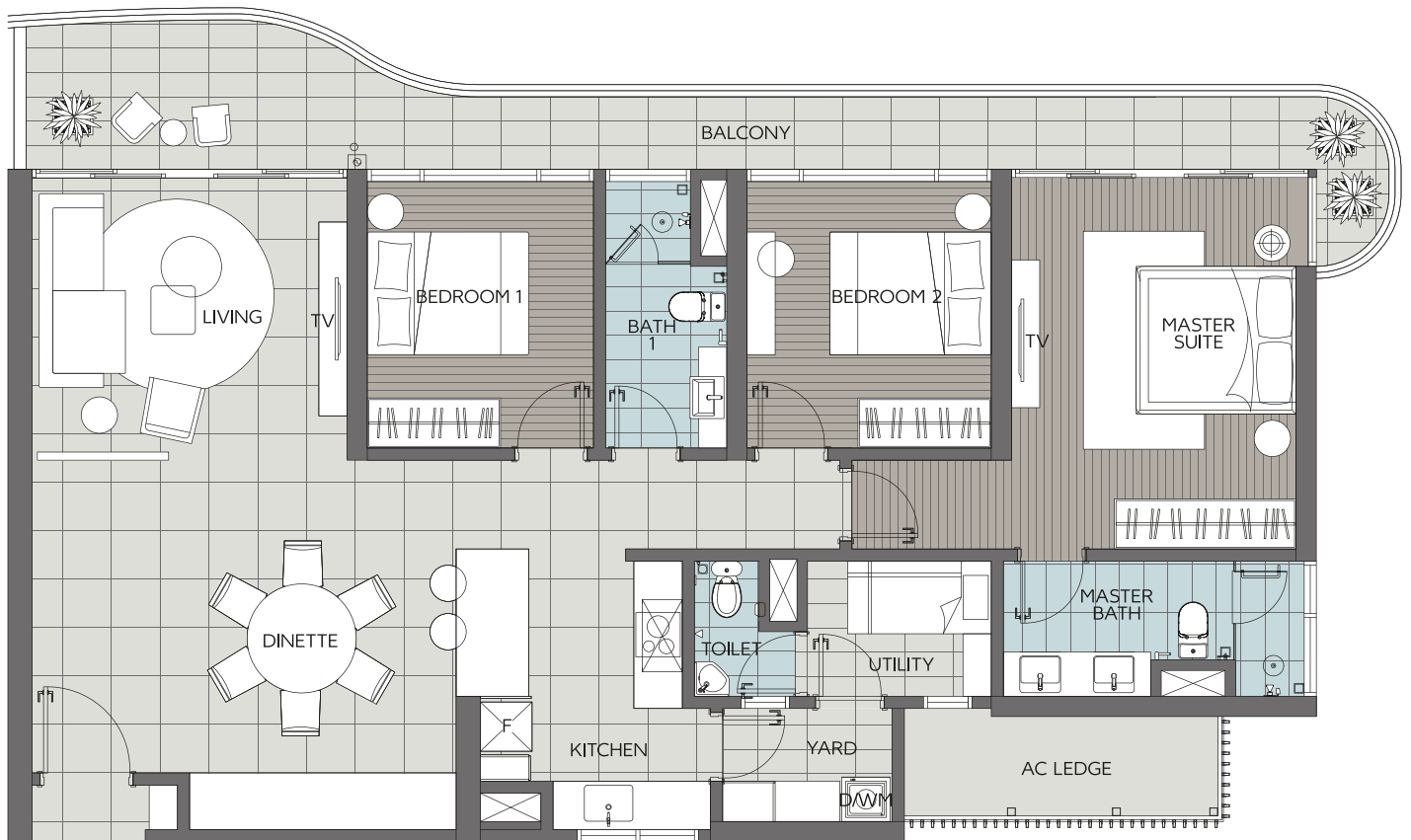


Tower D Tower A

Tower C Tower B



KLCC view



ENTRANCE

Facilities Plan

Level 11



- | | | | |
|--------------------------------------|---------------------------|-------------------------------------|-------------------------|
| 1. Half Basketball Court | 11. Function Hall | 21. Stretching Area | 32. Children |
| 2. Zen Reflexology | 12. Pre-function Area | 22. Gymnasium | 33. Seating |
| 3. Playground | 13. Jacuzzi | 23. BBQ Area | 34. Viewing Deck |
| 4. Climbing Wall | 14. Swimming Pool | 24. Central Plaza | 35A. Multi-purpose Deck |
| 5. Parcourse | 15. Wading Pool | 25. Synchronised Fountain | 35B. Deck |
| 6. Zen Nodes | 16. Bridge | 26. Water Cascade | 36. Outdoor Shower |
| 7. Collection of Aromatherapy Plants | 17A. Floating Sundeck | 27. Reflective Pool | 37. Putting Green |
| 8. Multimedia Room | 17B. Sundeck on Pool Deck | 28. Collection of Ornamental Plants | 38. Covered Walkway |
| 9. Games Room | 18. Shelter | 29. Collection of Ecological Plants | |
| 10. Launderette | 19. Cabanas | 30. Surau | |
| | 20. Steam Bath | 31. Retreat Pavilion | |

Facilities Plan

Level 27

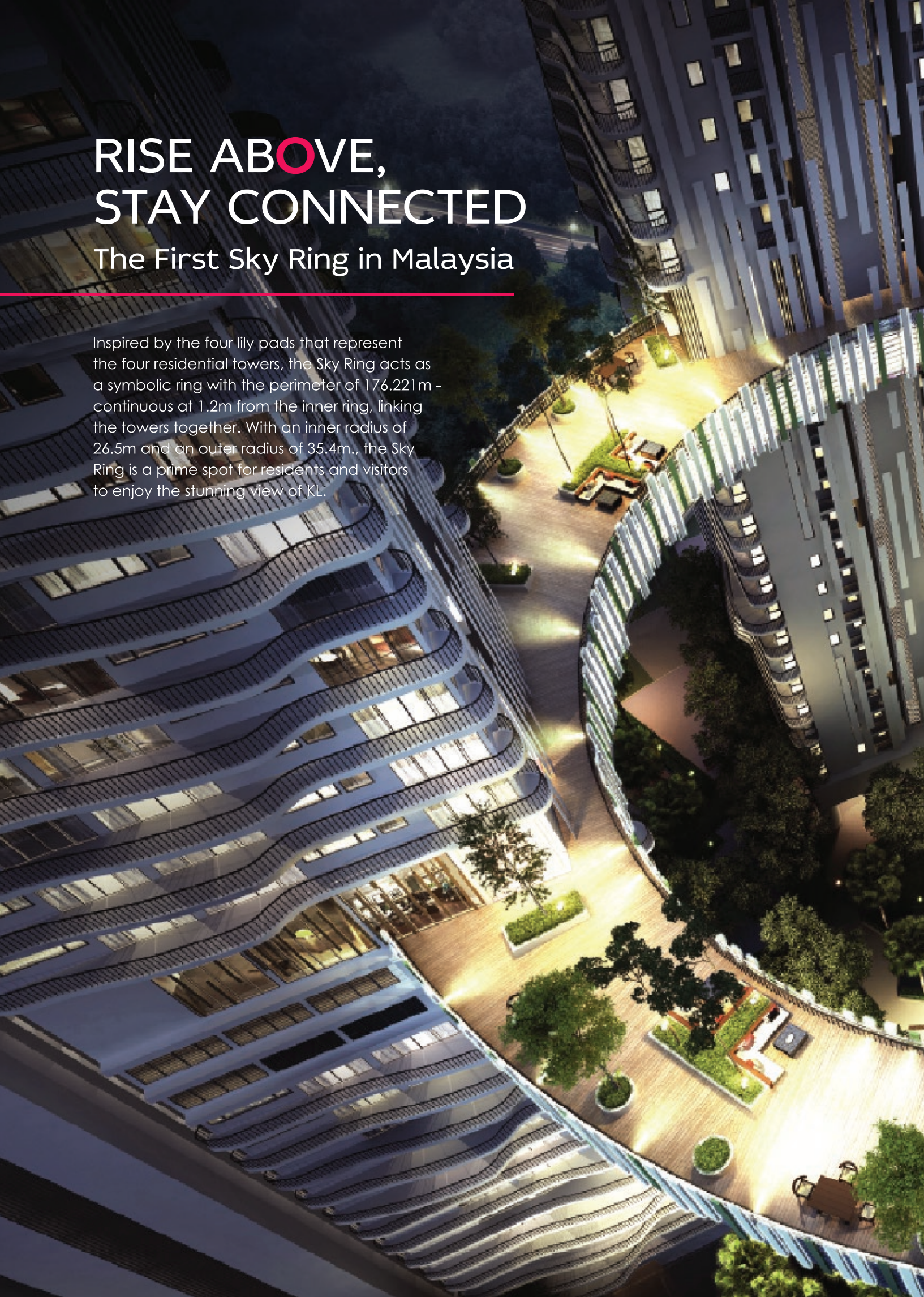


- | | |
|--------------------------|--------------------------------------|
| 1. Aerobics Studio | 9. Private Alfresco Lounge |
| 2. Outdoor Dance Studio | 10. Residential Facility Foyer |
| 3. Gym | 11. Reading Alcove |
| 4. Outdoor Exercise Deck | 12. Library |
| 5. Outdoor Chess Game | 13. Interactive Games Lounge |
| 6. Theatrette | 14. Audio-Visual Suite |
| 7. Games Room | 15. Pebble Wash Path |
| 8. Water Feature | 16. Outdoor Timber Deck Seating Area |

RISE ABOVE, STAY CONNECTED

The First Sky Ring in Malaysia

Inspired by the four lily pads that represent the four residential towers, the Sky Ring acts as a symbolic ring with the perimeter of 176.221m - continuous at 1.2m from the inner ring, linking the towers together. With an inner radius of 26.5m and an outer radius of 35.4m., the Sky Ring is a prime spot for residents and visitors to enjoy the stunning view of KL.





List of Amenities includes:

Medical Centers

- Gleneagles (1.1km)
- HSC Medical (2.2km)
- Prince Court (3.8km)
- Kuala Lumpur Hospital (4.9km)

International Schools

- Sayfol International School (1.7km)
- The International School of KL , Ampang Hilir (2.4km)
- Mutiara International School (2.7km)
- Eaton House International School (4.7km)
- Fairview International School (5.2 km)

Shopping

- Great Eastern Mall (900m)
- KLCC (3.4km)
- Ampang Point (2.8km)
- Avenue K (2.9km)

Leisure & Recreation

- Darul Ehsan Golf Course (900m)
- KLCC Park (3.8km)
- Royal Selangor Golf Club (5.3km)
- Zoo Negara (7km)
- Genting Highland (40 km)



Specifications

We believe in placing emphasis on the things that matter, right down to the finest details. At Datum Jelatek, your homes are equipped with only the highest-quality finishing touches and materials, so you can live a truly distinctive lifestyle.

STRUCTURE	Reinforced Concrete								
WALL	Brick Wall / Reinforced Concrete Wall								
ROOF	Reinforced Concrete Flat Roof								
CEILING	Plasterboard & Paint / Skim Coat & Premium Paint								
WINDOWS	Aluminum Framed Glass Window								
DOORS	Metal / Timber Door Frame Selected Quality Timber / Glass								
IRONMONGERY	Premium Quality Locksets								
WALL FINISHES	Cement Render & Paint / Skim Coat & Paint								
FLOOR FINISHES	Selected Quality Engineered Timber (applicable to Bedrooms type A1, A1a, A2, A2a, A3, A3a, A4, A4a, B1, B1a, B2, B2a, B3, B3a & C1, C1a, C2, C2a, C3, C3a) Natural Stone with Timber Skirting (applicable to general area type B1, B1a, B2, B2a, B3, B3a & C1, C1a, C2, C2a, C3, C3a) Tiles with Timber Skirting								
SANITARY & PLUMBING FITTINGS		Type S	Type A1,A2	Type A3	Type A4	Type B1	Type B2,B3	Type C1	Type C2,C3
	Water Closet	1	1	1	1	2	2	3	3
	Wash Basin with Tap	1	1	1	1	3	3	4	4
	Kitchen Sink with Tap	1	1	1	1	1	1	1	1
	International-standard Hand Bidet	1	1	1	1	2	2	3	3
	Shower Head	1	1	1	1	1	1	2	2
	Hand Shower	1	1	1	1	2	2	2	2
	Tap	1	1	1	1	2	2	2	2
ELECTRICAL INSTALLATIONS	Lighting Point	11	13	14	13	30	30	34	36
	Power Point	12	17	19	17	27	23	30	30
	Ceiling Fan Point	2	3	3	3	4	4	5	5
	Air-Conditioner Point	2	2	2	2	4	4	5	5
	Hot Water Storage	1	1	1	1	2	2	2	2
	Water Heater Point	1	1	1	1	2	2	3	3
	SMATV Point	1	2	2	2	3	3	4	4
	Door Bell Point	1	1	1	1	1	1	1	1
	Data Point	1	2	2	2	3	3	4	4
	Video Intercom	1	1	1	1	1	1	1	1
INTERNAL TELEPHONE TRUNKING & CABLING	Telephone Point	1	2	2	2	3	3	4	4



Dining Area



Master Bedroom

Datum Jelatek comes with luxury finishes and appliances, where selection is done with meticulous thought and care, bringing only the best & finest quality to its residents and investors.

teka **TOTO**[®]

legrand[®]



Magnificent View



Branching Out to THE COMMUNITY

Centred on bringing people closer, Datum Jelatek boasts an impressive number of transportation options to give its residents and surrounding communities an urban lifestyle unlike any other.

**HOTLINE NUMBER:
011 - 17000640**



www.datumjelatek.com.my

Developer

DATUMCORP
INTERNATIONAL **PKNS**

Datumcorp International Sdn Bhd

L3-02 (P1), Datum Jelatek,
Jalan Jelatek, 54200 Kuala Lumpur.
E sales@datumcorp.com.my

Sales Agent